

HOFMANN UNIVERSAL EXTRUDER FOR THERMOPLASTIC

A new generation of extruders! All our experience in manufacturing single-line extruders since 1969 together with our know-how in multi-line extruders since 1987 are compacted in this innovative design.

Depending on the extruder width selected (modifiable at a later date), you can use up to as many as 12 individually controlled shutters in a parallel arrangement. That means, depending on the type of control:

- single lines in different widths up to a system-specific maximum;
- continuous double or triple lines;
- double-line markings consisting of a continuous and a broken line; and
- various types of profiled markings, with and without basic layer (see diagrams 91 31 215 a,b)

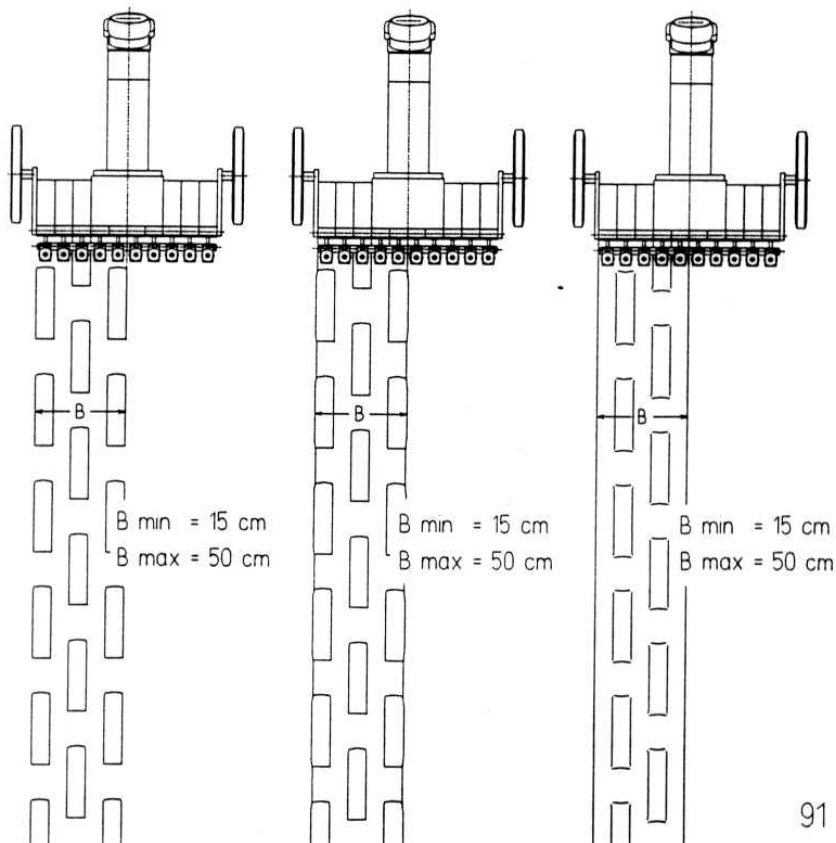
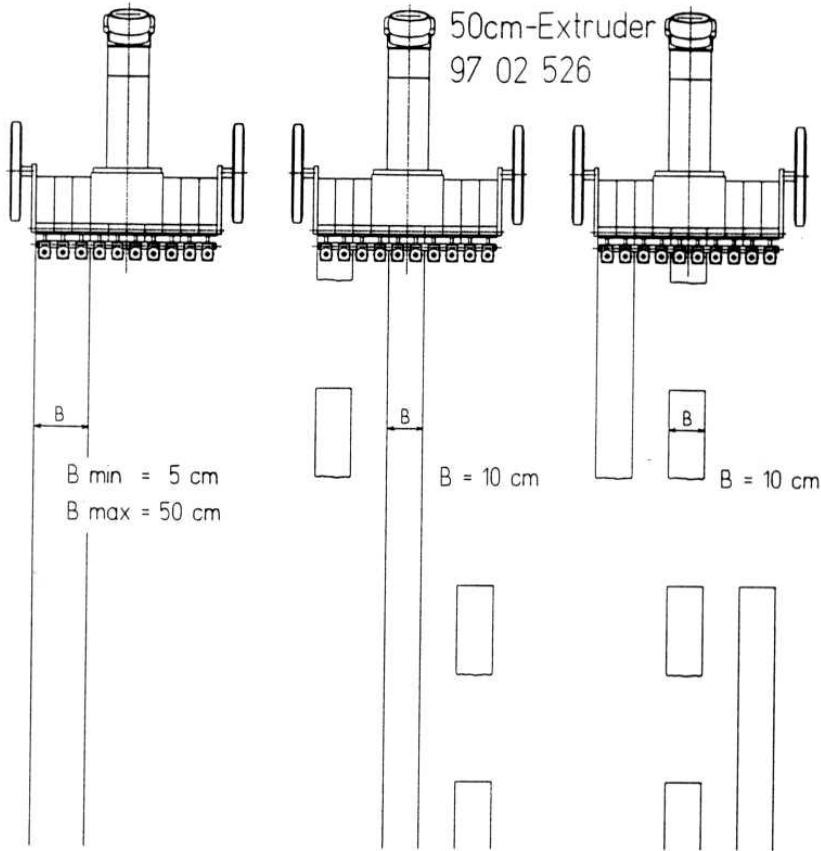
And these are the outstanding features:

1. Modular system: Based on a central module for line widths up to 20 cm, add-on modules can be fitted in sizes of 5 cm to any system width to provide maximum line widths of up to 60 cm (see diagram 91 31 216). Flexibility for us, and also for you! It's no problem for you, either, to modify the system width later. At the time you purchase your equipment, perhaps you don't yet know what is the most suitable system width for your purpose. Or you intend upgrading your narrow single-line extruder to a multi-line extruder. Or you have discovered that a wide system is too heavy and bulky for you. There are numerous reasons why it is expedient to modify the width later.
2. Lightweight: You could think that a modular structure makes the extruder heavy. A 50-cm extruder with 10 individually controlled 5-cm shutters weighs only 145 kg when ready for operation, i.e. filled with thermoplastic and heat transfer oil. A comparable extruder in traditional form, though, weighs 245 kg.
3. No changes in line thickness on double lines consisting of a continuous and a broken line, due to an innovative method to control the thermoplastic circulation.
4. Flexible suspension using a universal joint. The equipment therefore has two track wheels to keep the extruder slit in a position constantly parallel with the road surface. This is vital for wide extruders and if the extruder slot has to be kept very close to the road surface.
5. The track wheels' (27 cm in diameter!) point of contact is located only 18 cm in front of the extruder slot. This greatly reduces the danger of ground contact of the extruder slot at extruders with extremely low setting on uneven surfaces.
6. Metering units governed by travel distance for glass beads can be driven by the track wheels. (The pneumatic clutch required for switching the bead dispenser on and off makes it necessary to increase the clearance between the wheels' point of contact and extruder slot by 5 cm.)
7. The shutters are no longer fitted with soft seals. No re-adjustment! Less maintenance!
8. A scale for the slot width is provided for each shutter to facilitate adjustment.
9. Every shutter is heated by a heavy flow of oil through large-size conduit pipes.
10. Every shutter is individually and independently detachable.
11. The lateral shutter clearance is adjustable. Wear can be compensated, leaks prevented.
12. Revolution indicator for extruder pump.

HOFMANN GMBH

WALTER HOFMANN GMBH

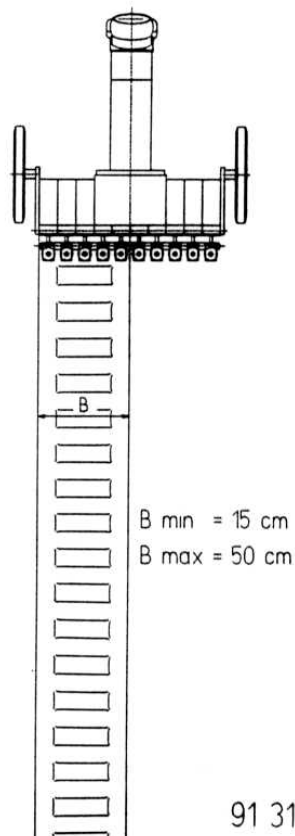
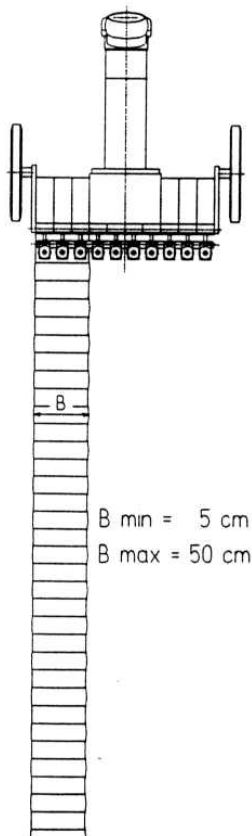
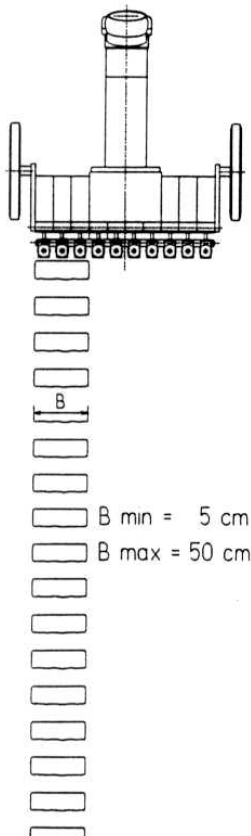
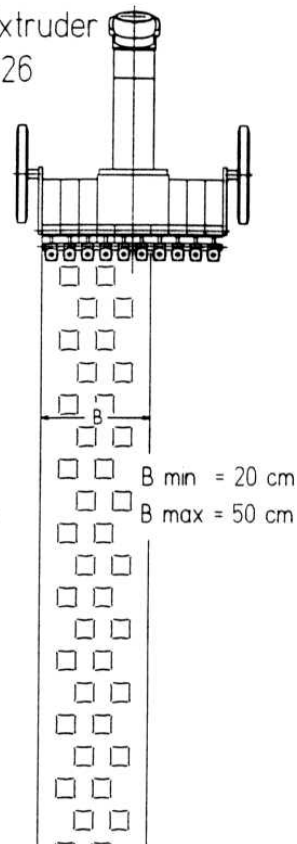
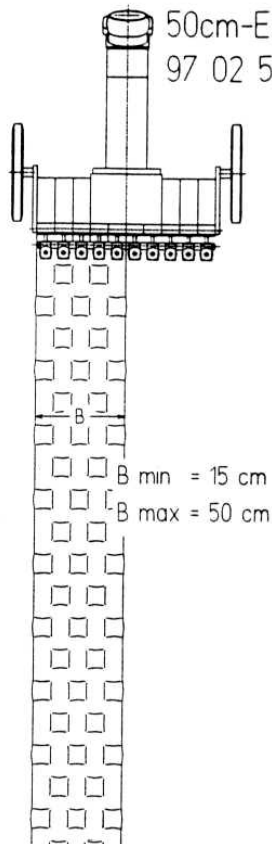
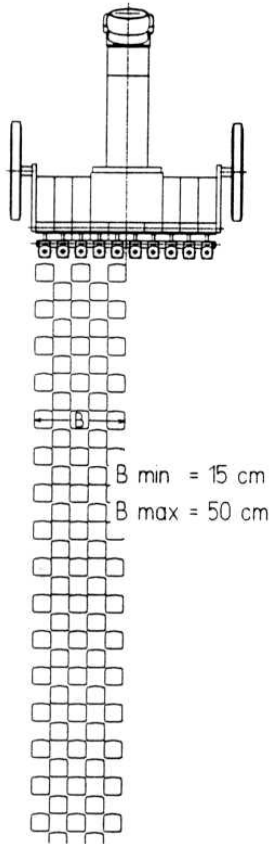
50cm-Extruder
97 02 526



91 31 215 a

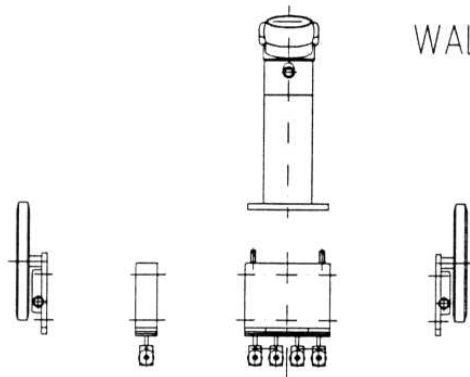
WALTER HOFMANN GMBH

50cm-Extruder
97 02 526



91 31 215 b

WALTER HOFMANN GMBH

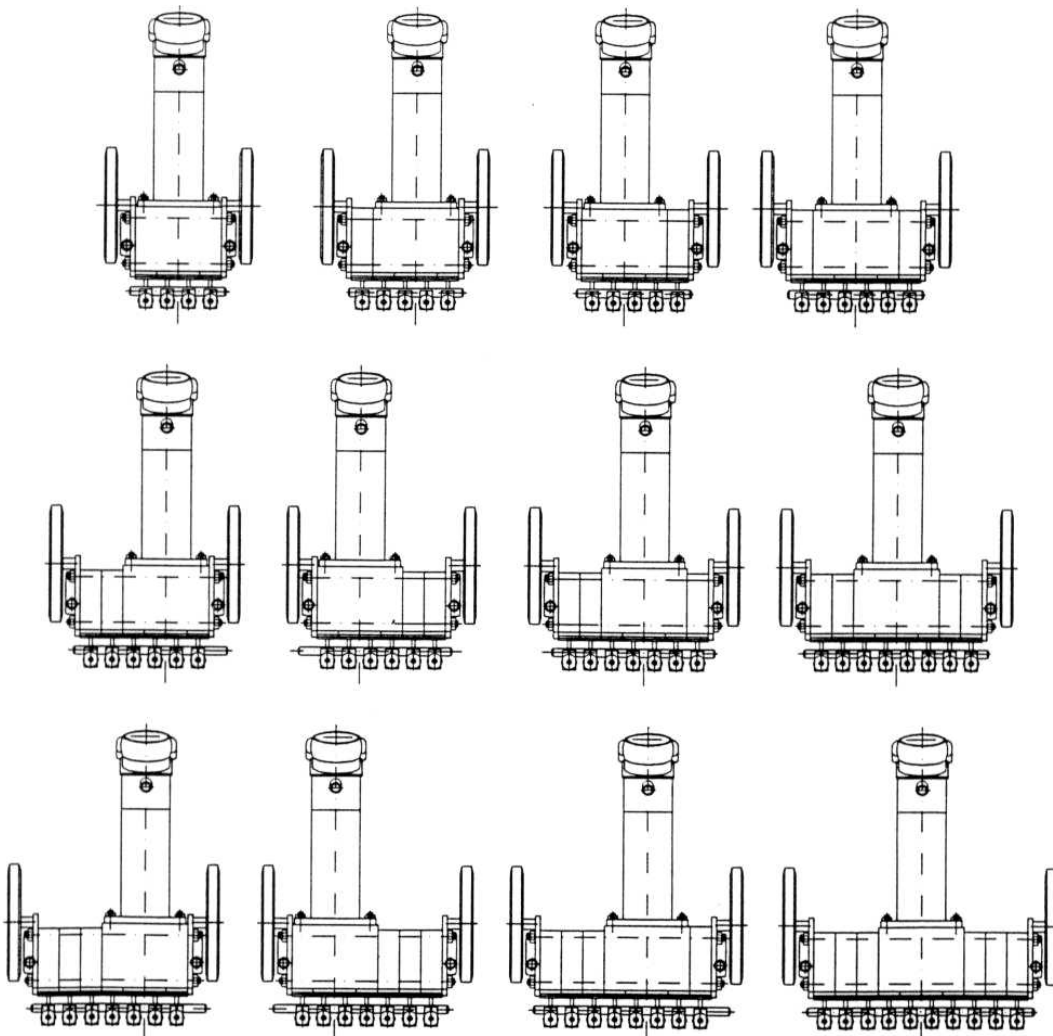


Wenige Module mit vielen Möglichkeiten
Hier nur einige Beispiele:

A few modules with various possibilities
Here some examples:

Peu de modules avec beaucoup de
possibilités. Ici quelques exemples:

Pocos módulos con muchas posibilidades
A continuación sólo algunos ejemplos:



91 31 216