



MALCON4/4E Electronic Control System and Documentation Unit



MALCON4/4E

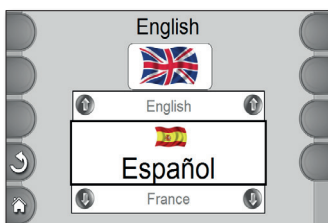
MALCON4/4E is a **multi-purpose device**, consisting of:

- Line-gap electronic for
 - manual,
 - semi-automatic and
 - fully automatic roadmarking applications
- Control unit for material quantity
- Documentation unit

with the following **possibilities**:

- call upon a multitude of marking programmes
- to check constantly accuracy of executed markings
- to document the accumulated data

Update of complete software via USB



Availability of standard software in **20 languages**, easily commutable

The operation is **self-explanatory** on a graphically brilliant, clearly arranged display.

MALCON4/4E offers to execute country-specific marking mode up to 3 parallel applied lines automatically.

Documentation and control of current delivery rate of metering pumps for:

- 1-component cold paints in low pressure (Airspray) and high-pressure (Airless) method
- sprayable 2-component cold plastics
- 2-component cold lastics (bellow pump)
- sprayable thermoplastics (bellow pump) incl. temperature display

Options:

- rear view camera
- MultiDotLine® control
- feedback system

MALCON4/4E Electronic Control System and Documentation Unit

Technical Data

Adjustment of line-space cycles of different line beginnings and endings as well as continuous lines are possible.

You can change between programmes during the marking operation, whereby the current line-space cycle must be terminated before starting the new programme.

A recognition system for direction of travel ensures that whenever the programme step is located inside a space between lines, you can manoeuvre the machine at random without worry. This means that you can always be sure of resuming your marking operation at the correct point.

Large memory capacity with memory space (24 programmes) for line combinations as well as 100 programmes for control of MultiDotLine® application.

You can activate or deactivate spray guns during the marking operation*.

You can generate profiled markings in extruder mode, e.g. „Spotflex®“.

Graphical presentation of revolution of extruder or indication of liter at machines equipped with pump (Airless and Air-spray).

Indication and printout of line lengths in gaps and continuous line lengths.

If a second parallel running programme (e.g. to execute a drain pipe for rain on the marking during marking operation) is requested, also this is possible with the MALCON4/4E. This means you can mark 2 different line-gap combinations, with pre-marking system even 3, but then only with MALCON4E.

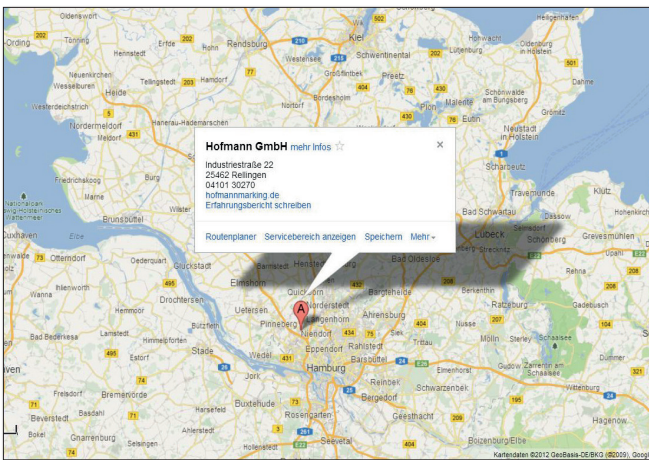
You have the possibility to enter the number of measurements within e.g. 250 m by yourself in order to create an analysis of the line thickness of the marked road (according german regulation).

Compliment with regional requirements demanding self-supervision of the marking operation can be met by recording of ambient and road surface temperature, relative humidity and use of additives.

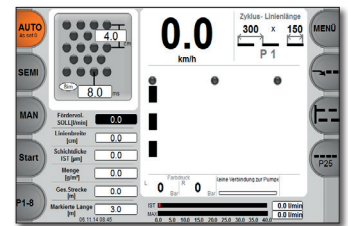
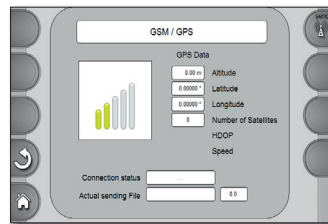
By entering line width and specific weight of marking material the current spray thickness (in μm and g/m^2) is displayed and can be controlled continuously.

Realization of simulation process (functional test at standstill).

* Line begin for the activated spray gun and line end for the deactivated spray gun run synchronously.

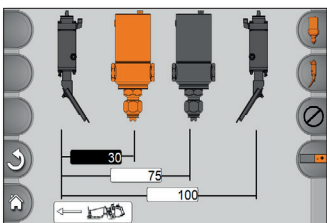


Data export via PDA, USB flash drive or even GPS/GSM (localization via GPS and data transfer via GSM) module is possible, in order to prepare marking or line width proofs.

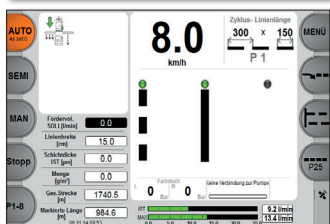


Display showing Spotflex® mode

Important information at a glance. **Documentation** of marked routes and pump performance (option) as well as control of line thickness (during pump operation).



Control of up to 4 marking units arranged in series like e.g. guns and bead guns or extruder flaps.



Display showing universal pump mode

Adjustment of selectable line and cycle lengths via **Joysticks**.

The electronic control system offers three marking options

Manual roadmarking:

The operator determines for how long and with which spray guns the marking operation is carried out.

Semi-Automatic roadmarking:

The operator determines with which spray guns and at which point the marking operation is to begin. The operation is terminated after reaching the programmed line length.

Fully automatic roadmarking:

The machine carries out the marking operation automatically in accordance with the programme the operator has entered.

In addition, the execution of advance warning line ranges (e.g. before crossing hilltops) can be controlled fully automatically.