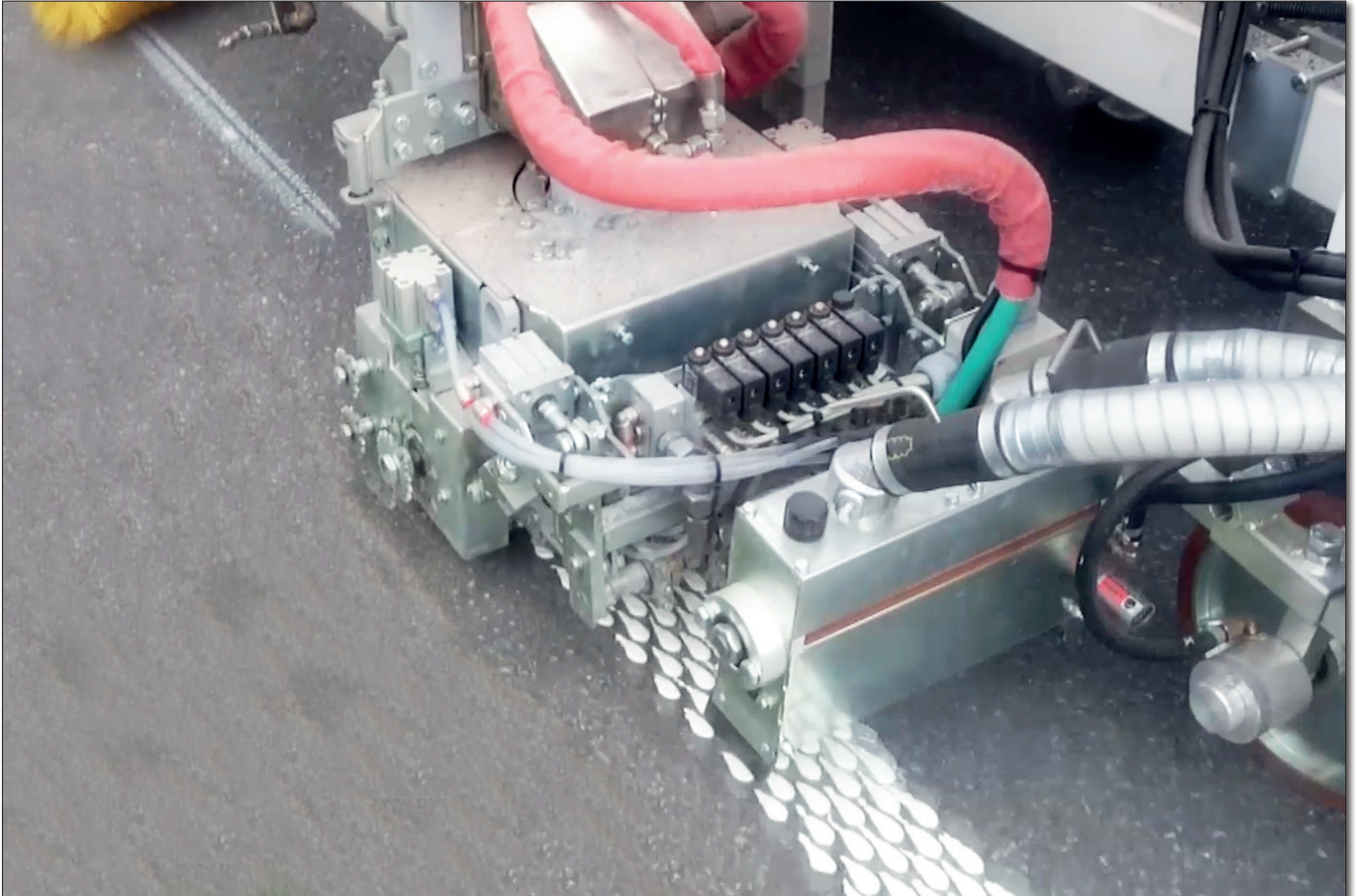
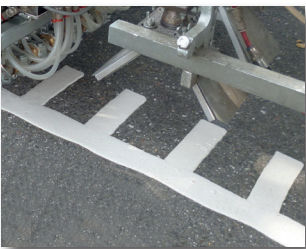




**Thermoplastic
MultiDotLine® Universal Extruder /
MultiDotLine®Plus - Extruder**



①



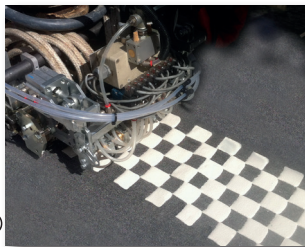
②



⑤



③



⑥



④



⑦

Line combinations consisting of continuous and interrupted lines for ...

- full-cover markings (plain line)
- profiled markings (Kam- and Longflex, chessboard, lettering)
- defined agglomerate markings
- defined agglomerate markings on plain lines in one single marking operation (MultiDot-Line®Plus).

- The exact application of marking patterns improves verifiability during acceptance by the customer.
- Accurately defined distances between the individual marking dots enable water to drain easily. Any dirt is thus rinsed from the marking reliably. The result is better maintenance of the retroreflection values.
- Variable generation of spaces between dots as well as size of dots (several perforated cylinders).

- Agglomerate and plain line beginnings and endings as well as no material splashes between the "dots" and in line-gaps due to heated extruder shutters. Furthermore by heating until outlet onto the road surface, the temperature of the material is kept constant (no problems with cooling down).

① MultiDotLine® Universal Extruder (30 cm) in operation

Marking patterns

- ② Kamflex
- ③ Longflex
- ④ „Dot“ (drop-shaped)
- ⑤ „Dot“ (round)
- ⑥ Chessboard
- ⑦ Lettering

Thermoplastic MultiDotLine® Universal Extruder / MultiDotLine®Plus - Extruder

Technical data

Max. marking width [cm]	Set of shutters [cm]
30	5 5 5 5 5 5 5 5 8 7 5 10 5 5 10
40	20 5 5 10 12 12 12 4 ¹⁾ 10 5 5 5 5 10
50	5 5 5 5 5 5 5 5 5 5 10 5 5 10 10 5 5

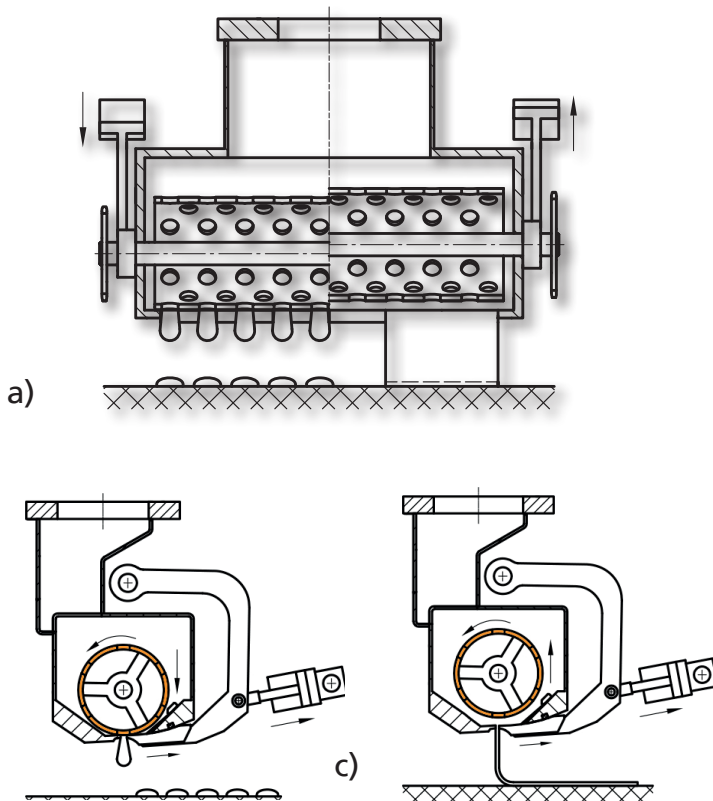
(Further sets of shutter upon request)

¹⁾ filler piece

- Ensurance of path-dependency (AMAKOS®) with MultiDotLine®- and MultiDotLine®Plus systems.
- Application of double lines and line combinations in one single marking operation, possible with "Dots" (drop-shaped, round and long) and "Longflex".
- High marking speeds.
- The rotating hollow cylinder for the exact determination of the marking patterns is located inside of the extruder housing. Thus, no heat problems resulting from too low ambient temperatures and wind.



Functional principle



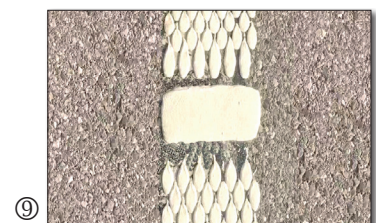
- Rotation of a hollow cylinder (scattering drum) equipped with outlets inside of the extruder housing.
- Execution of profiled markings (MultiDotLine®) at lowered drum.
- Execution of plain markings at raised scattering drum.

Pneumatically lowering and raising during marking operation from operator's stand possible.

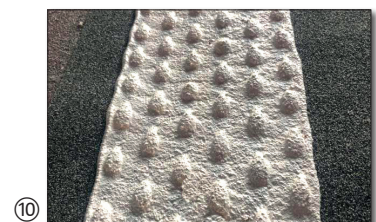
Additional marking patterns



⑧ „Dot“ (long)



⑨ „Rip'N'Dots“



⑩ MultiDotLine®Plus marking, profiles on basic line in one single marking operation.



⑪ ATM - Audio Tactile Marking